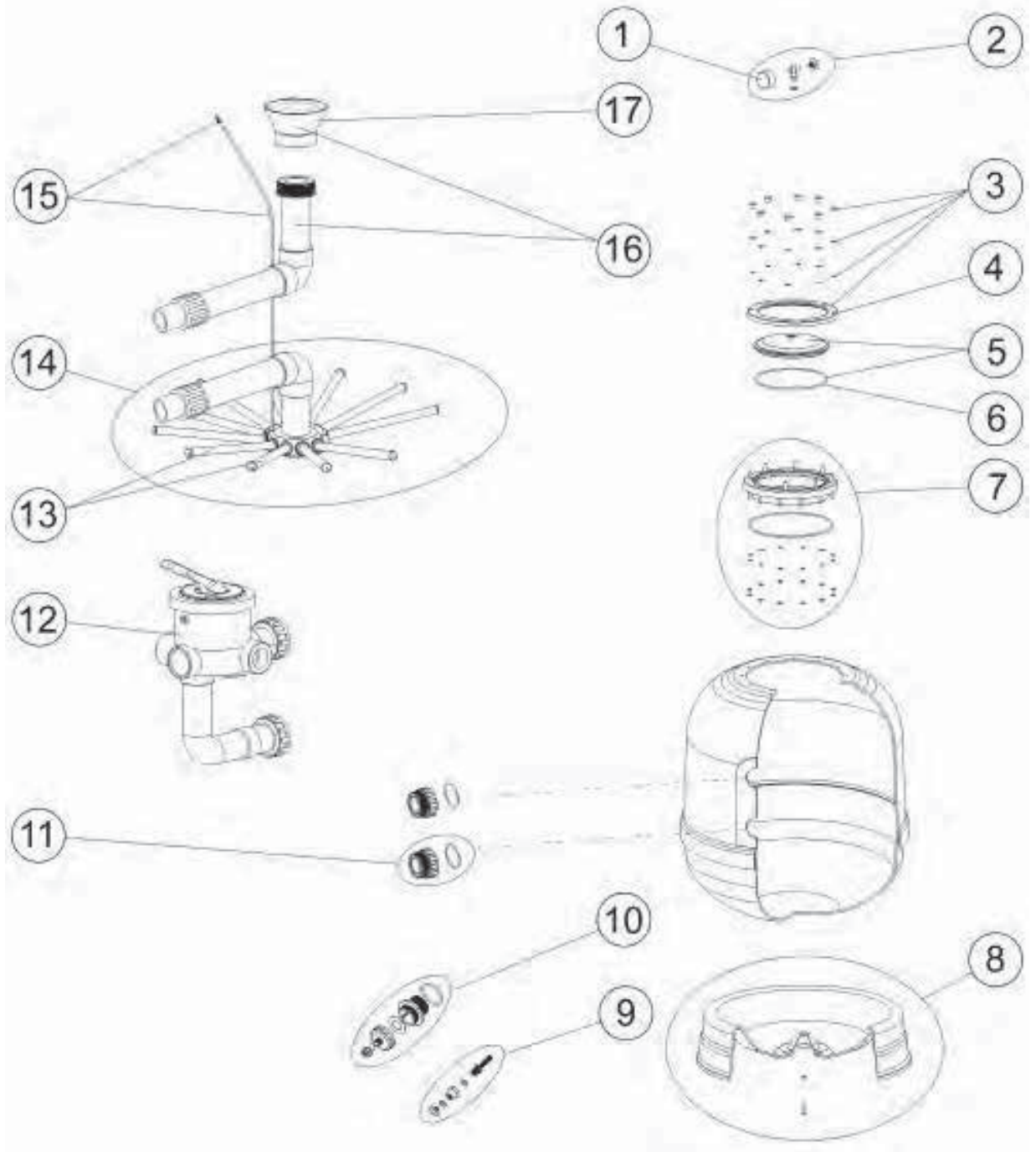




# MS - Filtre à sable

Spare Parts



Position	Description	Reference
1	Pressure gauge 1/8"	R0831200
2	Complete pressure gauge kit (with T-shape adaptor, seal & air relief)	R0831100
3	Lid collar and nuts kit	R0831300
4	Lid collar	R0831600
5	Transparent lid + Oring kit	R0831500
	Black lid + Oring	R0842400
6	Lid Oring	R0831400
7	20-bolts neck ring kit	R0831700
8	Filter base D470/530	R0831800
	Filter base D650	R0832000
	Filter base D800	R0832100
	Filter base D950	R0832200
9	Water drain 3/8"	R0832300
10	Sand & water double drain	R0832400
11	2" fitting + Oring	R0832600
	1 1/2" fitting + Oring	R0832500
12	1 1/2" Classic multiport valve kit (with plumbing)	09758
	2" Classic multiport valve kit (with plumbing)	14904
13	Manifold arms assembly D470/530	R0835200
	Manifold arms assembly D650	R0835300
	Manifold arms assembly D800	R0835400
	Manifold arms assembly D950	R0835500
14	Manifold assembly kit D470	R0832900
	Manifold assembly kit D530	R0833000
	Manifold assembly kit D650	R0833100
	Manifold assembly kit D800	R0833200
	Manifold assembly kit D950	R0833300
15	Air purge + 670mm pipe kit D470>800	R0835600
	Air purge + 845mm pipe kit D950	R0835700
16	Diffuser assembly kit D470	R0833900
	Diffuser assembly kit D530	R0834000
	Diffuser assembly kit D650	R0834100
	Diffuser assembly kit D800	R0834200
	Diffuser assembly kit D950	R0834300
17	Cone diffuser D50mm D470>650	R0833700
	Cone diffuser D63mm D800>950	R0833800