

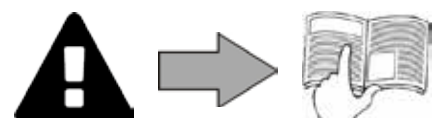
Diag box

Instructions for installation and use
English

EN



More documents on:
www.zodiac-poolcare.com



WARNINGS

GENERAL WARNINGS

- Failure to respect the warnings may cause serious damage to the pool equipment or cause serious injury, even death.
- The appliance is intended for use in swimming pools only and must not be used in application other than that for which it is designed.
- It is important that the equipment is operated by competent and qualified persons (both physically and mentally) who have previously received instructions for its use. Any person not meeting these criteria should not approach the appliance, in order to avoid exposure to dangerous parts.
- Keep children away from the equipment.
- The appliance must be installed in accordance with the manufacturer's instructions and respecting current local standards. The installer is responsible for installing the equipment and for compliance with national installation regulations. Under no circumstances can the manufacturer be held liable in the event of failure to comply with applicable local standards.
- For other than the simple user-maintenance described in this manual, the product must be serviced by a qualified professional.
- Incorrect installation and/or use may cause serious damage to property or serious injuries (possibly resulting in death).
- Any equipment, even carriage and packing paid, travels at the consignee's risk. The consignee should enter any reservations in writing on the carrier's delivery note, if there is any evidence of transport damage (and confirm them by recorded delivery letter to the carrier within 48 hours). In the event of a device containing coolant fluid that has been tipped over, issue your reservations to the carrier in writing.
- If the appliance suffers a malfunction, do not try to repair it yourself; contact a qualified technician.
- If the mains supply cable is damaged, it should be replaced by the manufacturer, its maintenance agent or other qualified risk, to prevent any risk.
- Refer to the warranty conditions for details of the permitted water balance values for operating the appliance.
- Defeating, eliminating or shunting any of the safety that may be a part of the device automatically voids the warranty, as does the use of unauthorized, third party replacement parts.
- Do not spray insecticide or any other chemical (flammable or non-flammable) in the direction of the appliance, as this could damage the body and cause a fire.
- Zodiac® Heat pump, filtration pump and filter appliances are compatible with most commonly used pool water treatment systems.
- For heat pump appliances or dehumidifiers, do not touch the fan or insert a rod or your fingers through the grating when the appliance is in operation. The fan rotates at high speed and may cause injuries or even death.

WARNINGS ASSOCIATED WITH ELECTRICAL APPLIANCES

- The electrical supply to the appliance must be protected by a dedicated 30 mA residual current protection device, complying with the standards and regulations in force in the country where it is installed.
- Before carrying out any operations, check that:
- The voltage indicated on the appliance's information plate corresponds to the mains voltage,
- The power grid is adapted to the power requirements of the appliance, and is grounded.
- The plug (where applicable) is suitable for the socket.
- In the event of abnormal operation or odours being released from the appliance, turn it off immediately, unplug it from its power supply and contact a professional.
- Before doing any work on the appliance, ensure that it, and any other equipment connected to the appliance, is switched off and disconnected from the power supply and that the heating priority (where applicable) is deactivated.
- Do not disconnect and reconnect the appliance to the power supply when in operation.
- Do not pull on the power cord to disconnect it from the power supply.
- Do not handle electrical parts with wet hands.
- Clean the terminal block or power supply socket before connection.
- For any component or sub-assembly containing a battery: do not recharge or dismantle the battery or throw it into a fire. Do not expose it to high temperatures or direct sunlight.
- In stormy weather, unplug the appliance to prevent it from suffering lightning damage.
- Do not immerse the appliance in water (with the exception of cleaners) or mud.

SPECIFIC FEATURES APPLICABLE TO "Pool cleaners"

- The cleaner must operate in pool water with a temperature of between 15°C and 35°C.
- To avoid possible injury and damage to the cleaner, do not operate the cleaner out of the water.
- In order to prevent possible injury, bathing is prohibited when your cleaner is in the pool.
- Do not use the cleaner during shock chlorination.
- Do not leave the cleaner unattended for an extended period.

WARNING ON THE USE OF A CLEANER IN A POOL WITH A VINYL SURFACE:

- Before installing your new cleaner, carefully inspect the lining of your pool. If the liner has eroded in some areas, or if you notice gravel, folds, roots or corrosion caused by metal on the inner surface of the liner, or if you notice that the support (bottom and walls) is damaged, do not install the cleaner before performing the necessary repairs or before replacing the liner using a qualified professional. The manufacturer cannot be held liable in any way for damage caused to the liner.
- The surface of certain vinyl patterned surfaces can wear rapidly and the patterns disappear on contact from objects such as cleaning brushes, toys, inflatable buoys, chlorine distributors and automatic pool cleaners. The decoration on some vinyl surfaces can be scratched or worn by basic friction such as through the use of a pool brush. The colours of certain patterns can also be erased during use or when in contact with objects in the pool. The erased patterns, wear or scratching of vinyl surfaces are not the liability of the manufacturer and are not covered by the limited warranty.

Recycling



This symbol means that your appliance should not be disposed of with other rubbish. It will be selectively collected for the purpose of reuse, recycling or transformation. If it contains any substances that may be harmful to the environment, these will be eliminated or neutralised. Contact your retailer for recycling information.






- Before you do anything with the device, it is vital that you read this installation and user manual, as well as the "warnings and warranty" booklet delivered with the device. Failure to do so may result in material damage or serious or fatal injury and will invalidate the warranty.
- Keep these documents for future reference and pass them on throughout the device's service life.
- Distributing or modifying this document in any way without authorisation from Zodiac® is prohibited.
- Zodiac® is constantly developing its products to improve their quality; therefore, the information contained in this document may be modified without notice.

Contents

1. Package content	3
2. Diag Box operating principle (Quick Test and Full Test)	3
3. Electrical connection	3
4. Vortex™ 1 Test (Robot)	4
5. TornaX, CyclonX™ and Vortex™ (except Vortex™1) Complete Test	5
6. Lazernaut, Cybernaut™ NT (>2010) Test (Robot)	8
7. Remote control Test : depending on the Vortex™ model	9
8. Full Test: enhanced mode (with Full Test Software application)	9
9. Product conformity	10

1. Package content

Check that your appliance has not been damaged during transport (shocks, broken parts, etc.). If you find any problems do not hesitate to contact Zodiac® before using the product.

Diag Box (x1)	Adaptor organiser (x1)	Adaptors (x6)
		

2. Diag Box operating principle (Quick Test and Full Test)

The Diag Box is a tool which has been specially designed to help professionals detect faults on Zodiac® electric robots.

Depending on your needs (and the appliance to be inspected), you may carry out 2 types of test:

- **Quick Test:** This is a "simplified" test using the Diag Box tool only (may be carried out in the field, for example). This mode lets you launch automatic verification cycles and view a certain number of steps and any error codes directly on the Diag Box;



During the test, do not touch the robot or press the keys on the robot control unit.

- **Full Test:** This "enhanced" mode lets you view or export more detailed information (number of hours' operation, error history, etc.).

To use this mode, simply connect the Diag Box to a computer (via the USB cable included) and use an additional free software package (Full Test Software, which may be downloaded from the Zodiac website: \$.8).

3. Electrical connection



- To connect the adaptor, follow the configuration below: **End with coloured ring on the Diag Box side.**
- Connect the USB cable from the Diag Box to the computer **to use Full Test mode only**, otherwise the Quick Test functions will no longer be accessible.

1

- Mains connection.
- **diag** message displayed.



2

- Robot
- Control box
- Motor unit

3

Computer connection
(for Full Test mode only), \$.8

3.1 Specific connection for Lazernaut, Cybernaut™ NT (>2010)

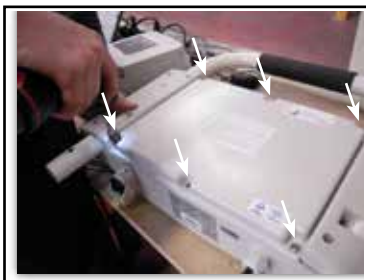


Image 1. Open the robot's control box

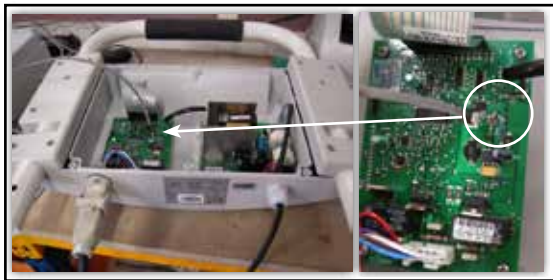
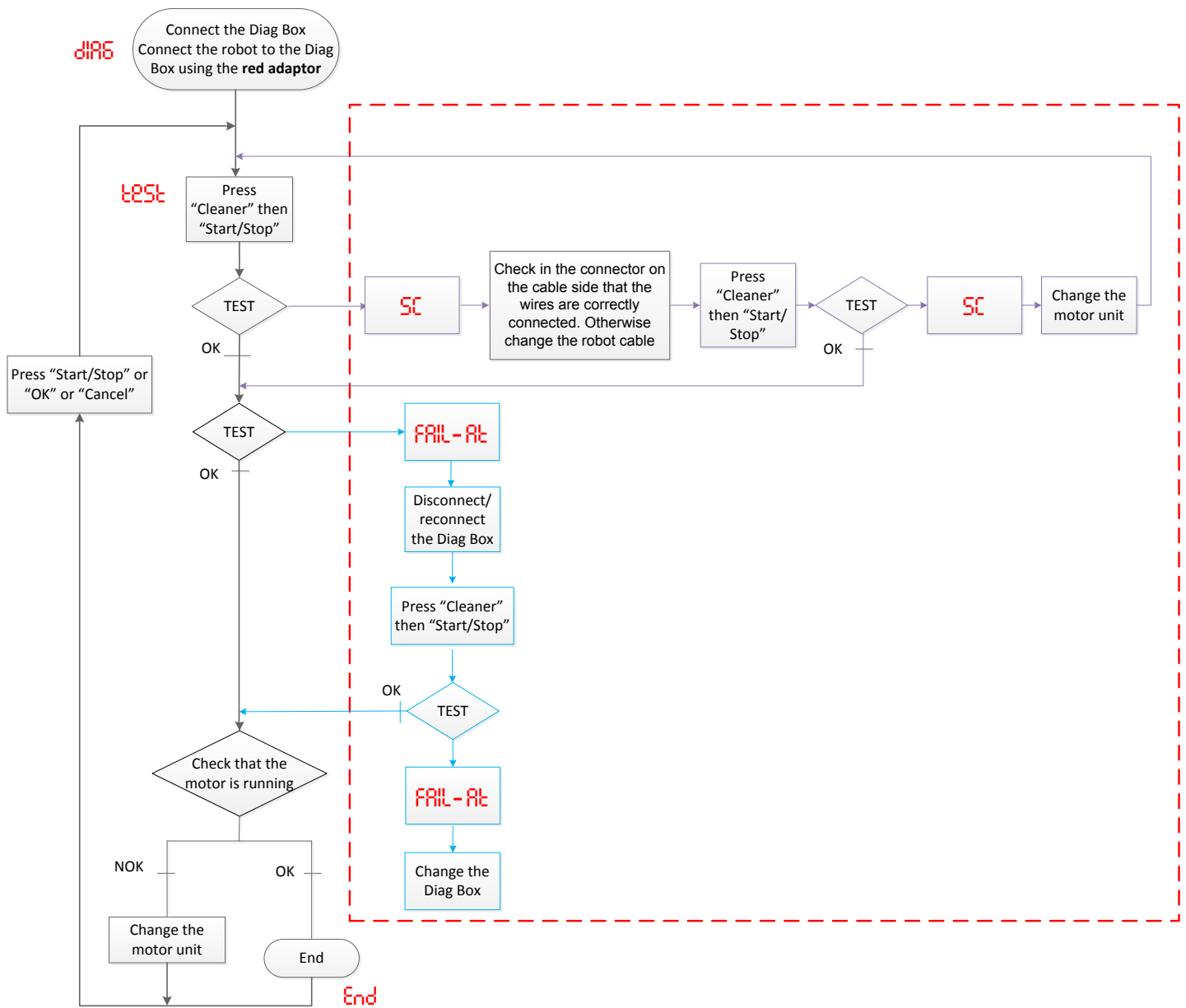


Image 2. Connect the yellow adaptor between the Diag Box and the robot's control box

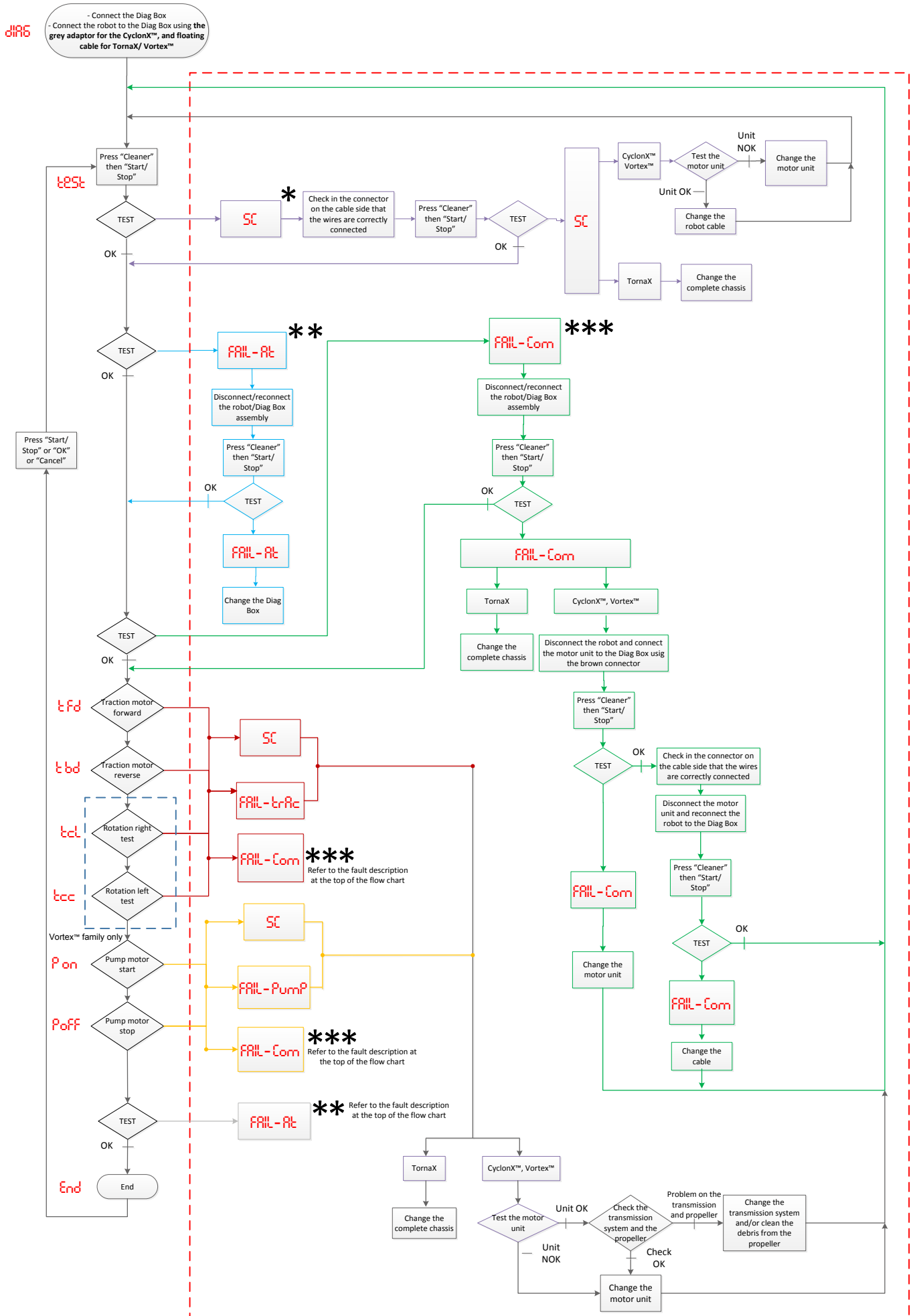
Type of robot	Elements to be tested	Type of cable to be connected
TornaX	Robot	Robot floating cable
	Control box	GREEN adaptor
Cyclonx™	Robot	GREY adaptor
	Control box	BLUE adaptor
	Motor unit	BROWN adaptor
Vortex™	Robot	Robot floating cable
	Control box	GREEN adaptor
Vortex™ 1	Robot	RED adaptor
Lazernaut, Cybernaut™ NT (>2010)	Robot (via robot control box: §3.1)	YELLOW adaptor

4. Vortex™ 1 Test (Robot)



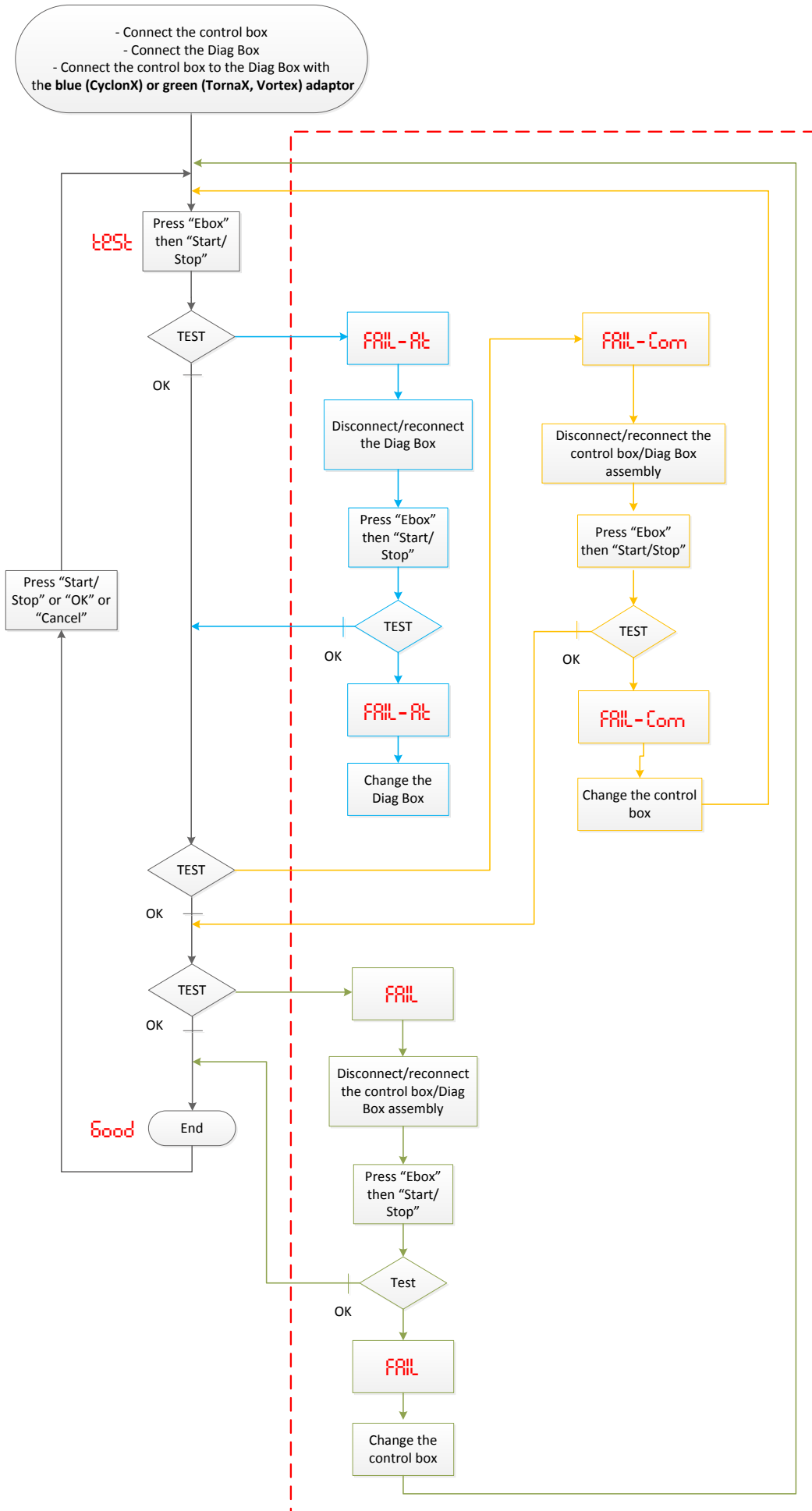
5. TornaX, CyclonX™ and Vortex™ (except Vortex™1) Complete Test

5.1 Testing the robot



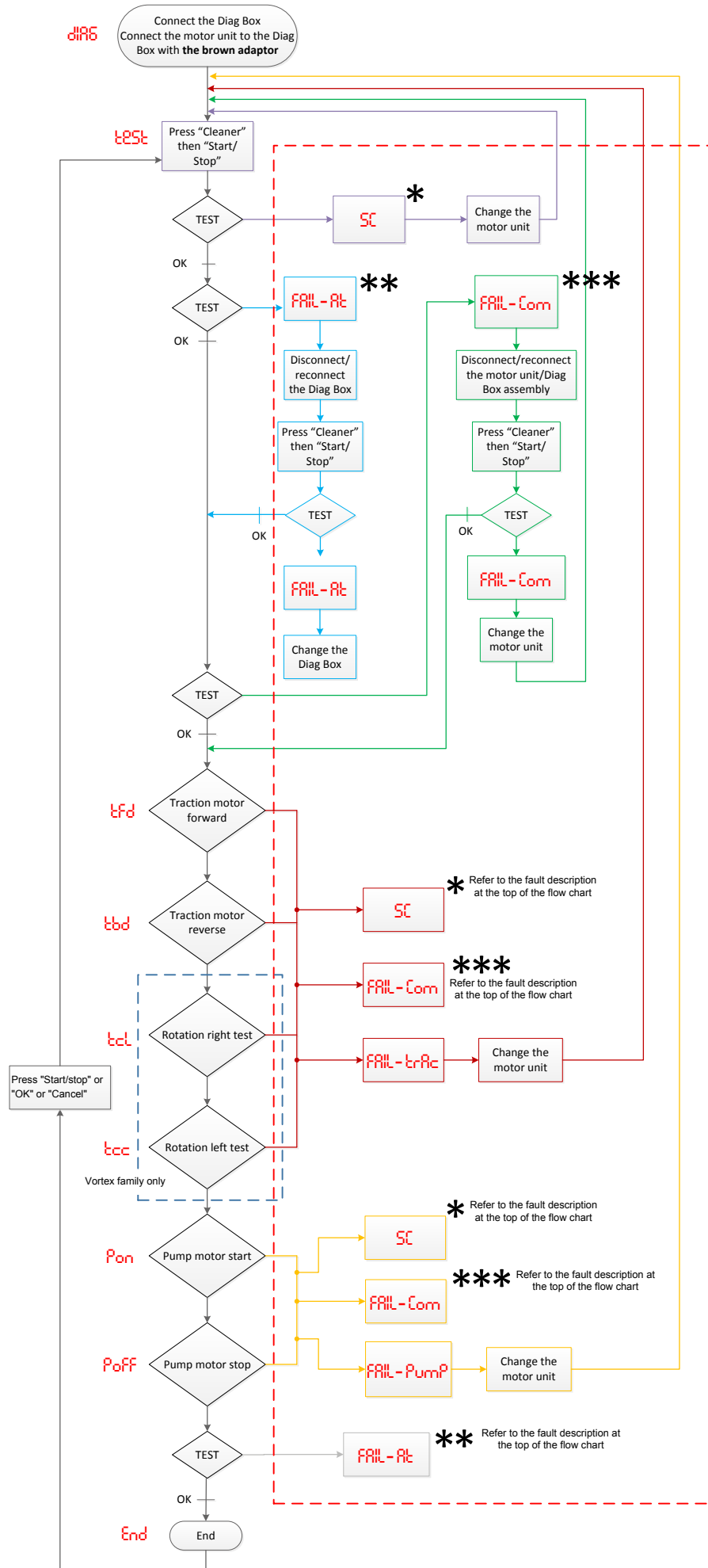
5.2 Testing the control box

diag

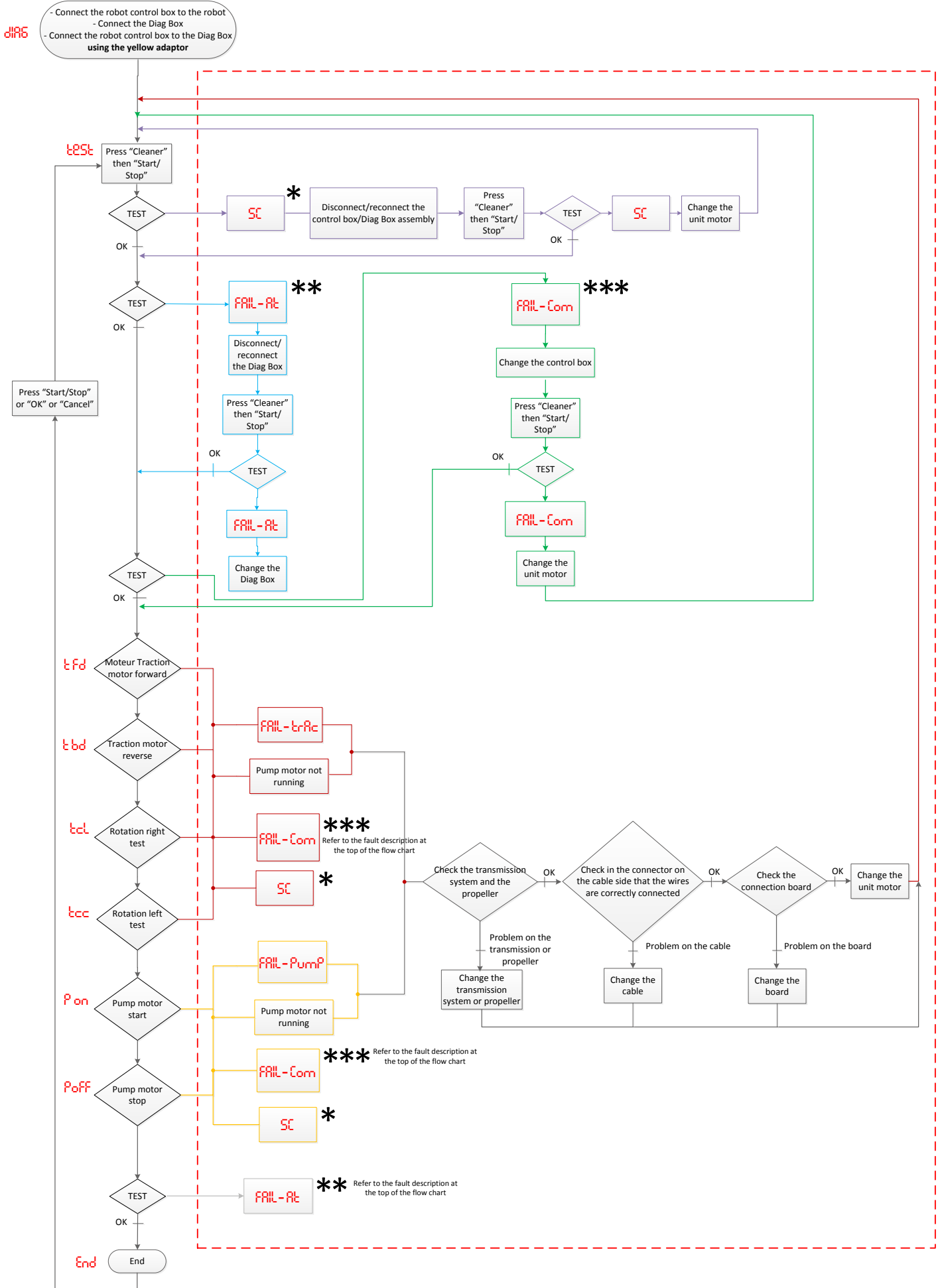


EN

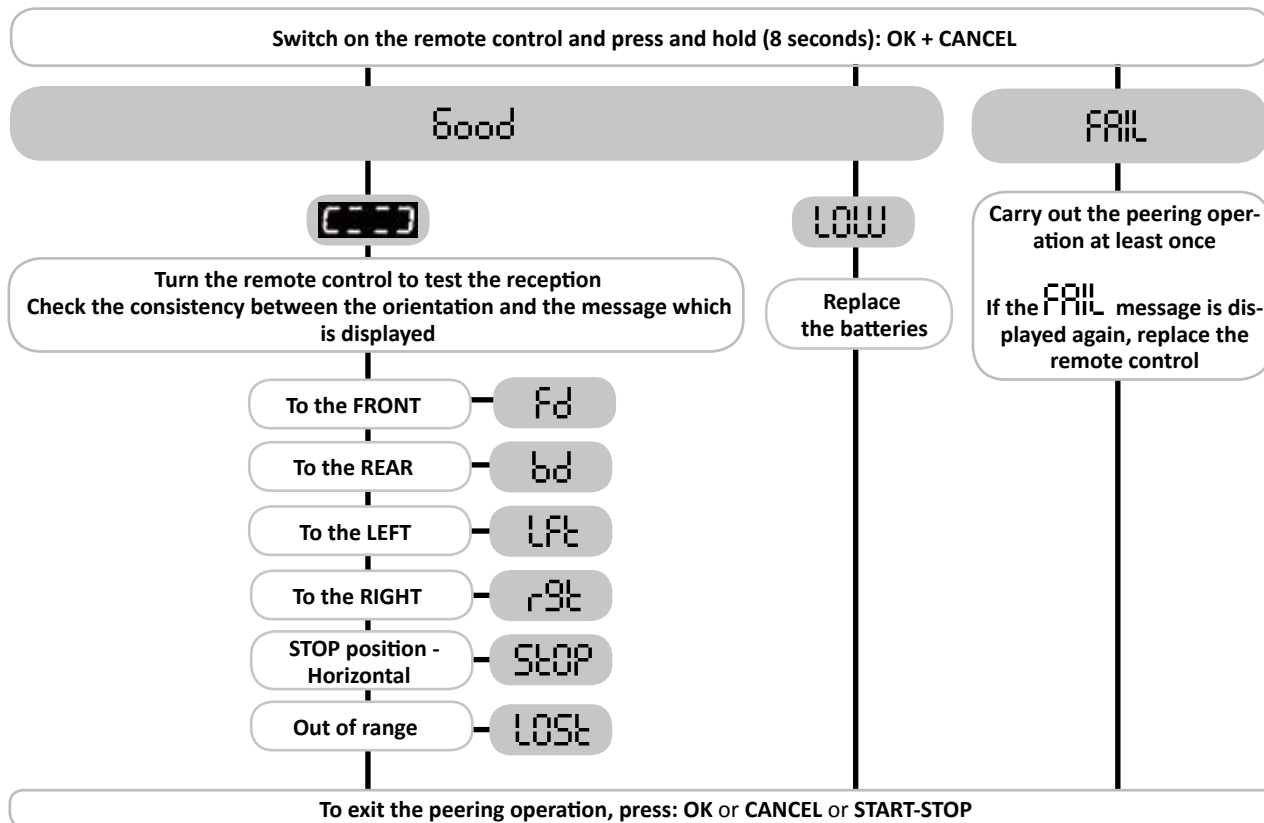
5.3 Motor unit (CyclonX™, Vortex™)



6. Lazernaut, Cybernaut™ NT (>2010) Test (Robot)



7. Remote control Test : depending on the Vortex™ model



8. Full Test: enhanced mode (with Full Test Software application)

8.1 Downloading Full Test Software

Before you use the tool for the first time, download the **Full test Software** application from: www.zodiac-poolcare.com

- Access your **Professional area**
- Open the **Care Center** section, the **download Full Test Software**

8.2 Start-up

- 1
- Mains connection.
 - The **diag** message is displayed.



- 2
- Robot
 - Control box
 - Motor unit

3

Computer connection
==> The **usb** message replaces the **diag** message (the Quick Test functions are no longer accessible)

4

Full Test Software **application launched**

8.3 Meaning of the lights (Full Test mode)

Lights on	Meaning of the lights
	Not used
	The USB cable is connected
	Data being transferred between the Diag Box and the computer
	Malfunction detected, check the Diag Box display

9. Product conformity

This appliance has been designed and built according to the following standards:

Low voltage directive: 2006/95/EC

Electromagnetic compatibility directive: 2004/108/EC

EN 55014-1: 2000 +A1:2001 +A2:2002 ; EN 55014-2: 1997 +A1:2002

EN 60335-1: 2002 + A1:2004 + A2:2006 +A11:2004 + A12:2006 ; EN 60335-2-41: 2003 + A1:2004

Relative to which it is compliant.

SAFETY STANDARDS:

The cleaners are classified by the ETL as being compliant with the appropriate requirements of IEC 60335-2-41.



Votre revendeur
Your retailer

Modèle appareil
Appliance model

Numéro de série
Serial number

Trouvez plus d'informations et enregistrez votre produit sur
More informations and register you product on

www.zodiac-poolcare.com

