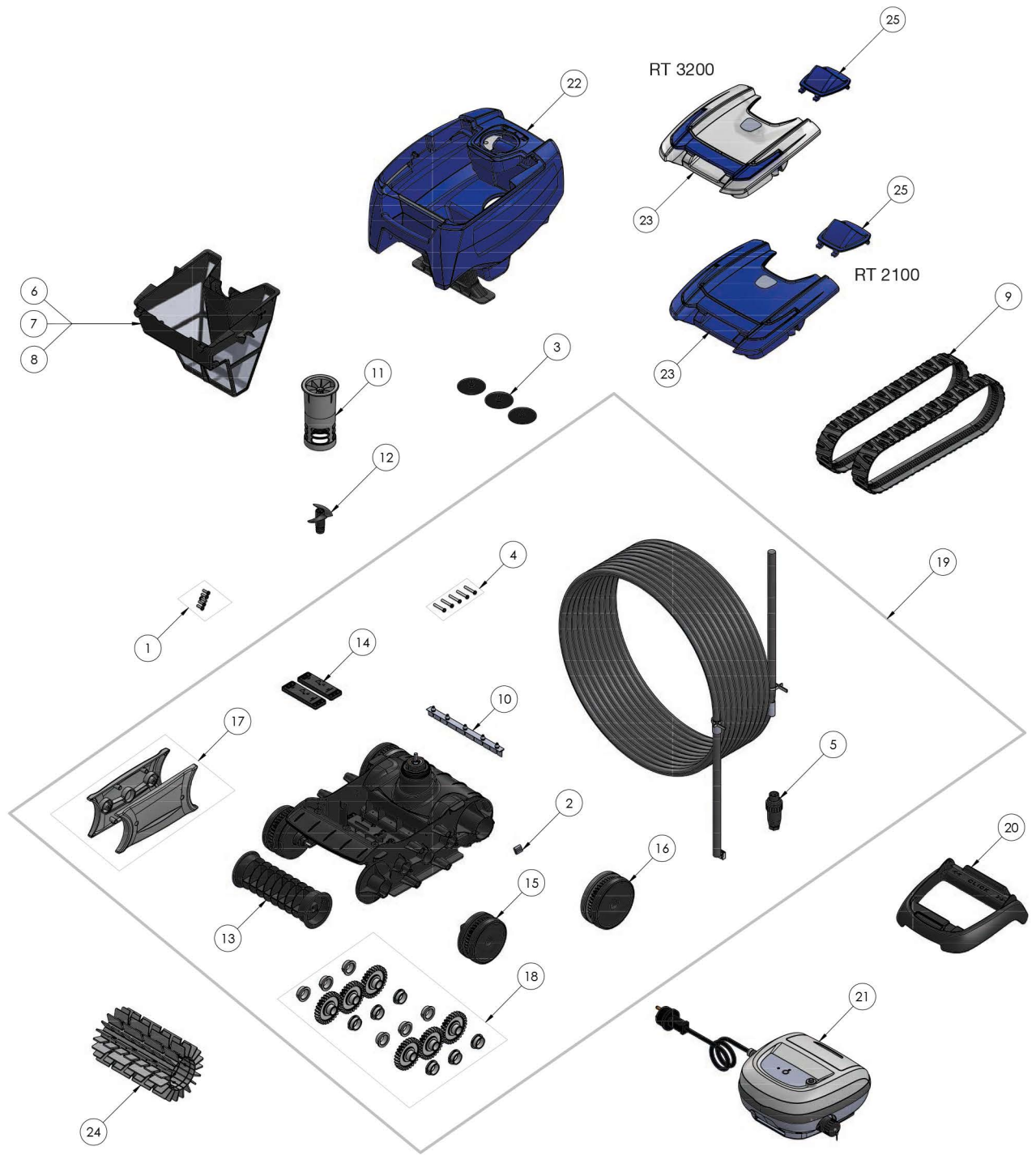




RT 2100 / RT 3200



Position	Description	Reference RT 2100	Reference RT 3200
1	Screw 4*12 mm (*5)		R0516700
2	Motor block shaft pin ø4 (set of 5)		R0657900
3	Exhaust valve c (set of 3)		R0633300
4	Screw 4*25 mm (*5)		R0638900
5	Floating cable plug		R0565600
6	Fine filter		R0762900
7	Large filter		R0763000
8	Ultra fine filter		R0763100
9	Tracks (set of 2)		R0765600
10	Blades (set of 5)		R0765800
11	Internal flow outlet		R0766100
12	Impeller		R0766200
13	Brush holder		R0767000
14	Ballast (set of 2)		R0767100
15	Complete front wheels (set of 2)		R0771800
16	Complete back wheels (set of 2)		R0771900
17	Flanges		R0772000
18	Complete gears kit		R0772100
19	Complete chassis		R0767400
20	Control unit base		R0662600
21	Control unit floor & wall		R0762300
	Control unit floor only	R0762200	
22	Complete body type 1		R0766300
23	Transarent cover type 9		R0764300
	Complete cover type 11	R0764500	
24	Brush r9022		R0764900
25	External flow outlet pms295		R0772200